



Excellent opportunity

10399 Lewistown Road

The perfect place to call home



For sale Just \$ 272,000

Mike Pintz/Holly Germon

From Richmond , take RT. 1 North to Lewistown Rd. turn right. House on right.



202 England St.,
Ashland, 23005

Office: 804-798-2440

Toll free: 1-800-550-2440

Fax: 804-798-2463

This Immaculate Brick Rancher has been Totally Renovated! The completely remodeled kitchen has ceramic tile floors, an eat-in area, a computer desk, and a stainless steel refrigerator & microwave that convey. The Full Bath was remodeled in 2007. The Half Bath was added in 2008. ALL NEW IN 2005: Roof, plumbing, light fixtures, vinyl tilt-out windows, hot water heater, and Heat Pump. There is invisible fencing in the back yard and part of the front yard for your pets. The basement was finished out by Bone-Dry Waterproofing in 2007. To make an appointment to see this lovely home, call Holly Germon at 804-338-6970 or Mike Pintz at 804-798-2440.

Ashland , Area 36

Elem. School: Elmont

Midd. School: Liberty

High School: Patrick Henry

3 bedrooms, 1 1/2 baths

Laundry Rm. /Workshop in basement

Hardwood floors throughout

Ceramic Tile in Kitchen

2 Brick Fireplaces

Invisible Fence

Brinks Alarm System

Fin. SqFt: 1,793

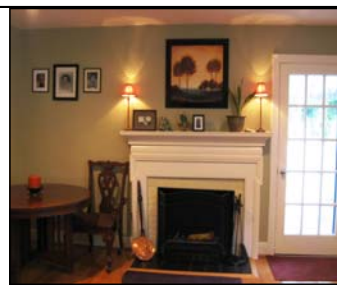
Basement Sq.Ft: 1,568

Acres: 0.53

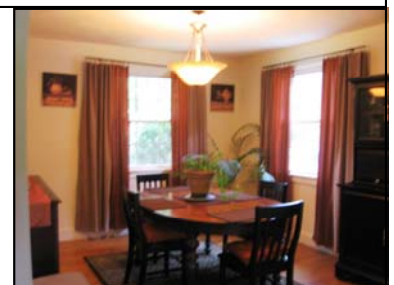
MLS: # 2829886



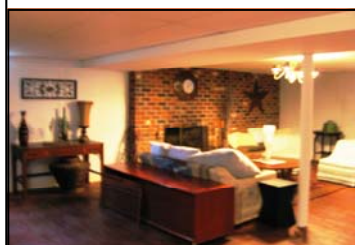
L.R. 14X 21



L.R. 14X21



D.R. 11X12



Basement 39X27



DEN 12X13



Kitchen 12X14